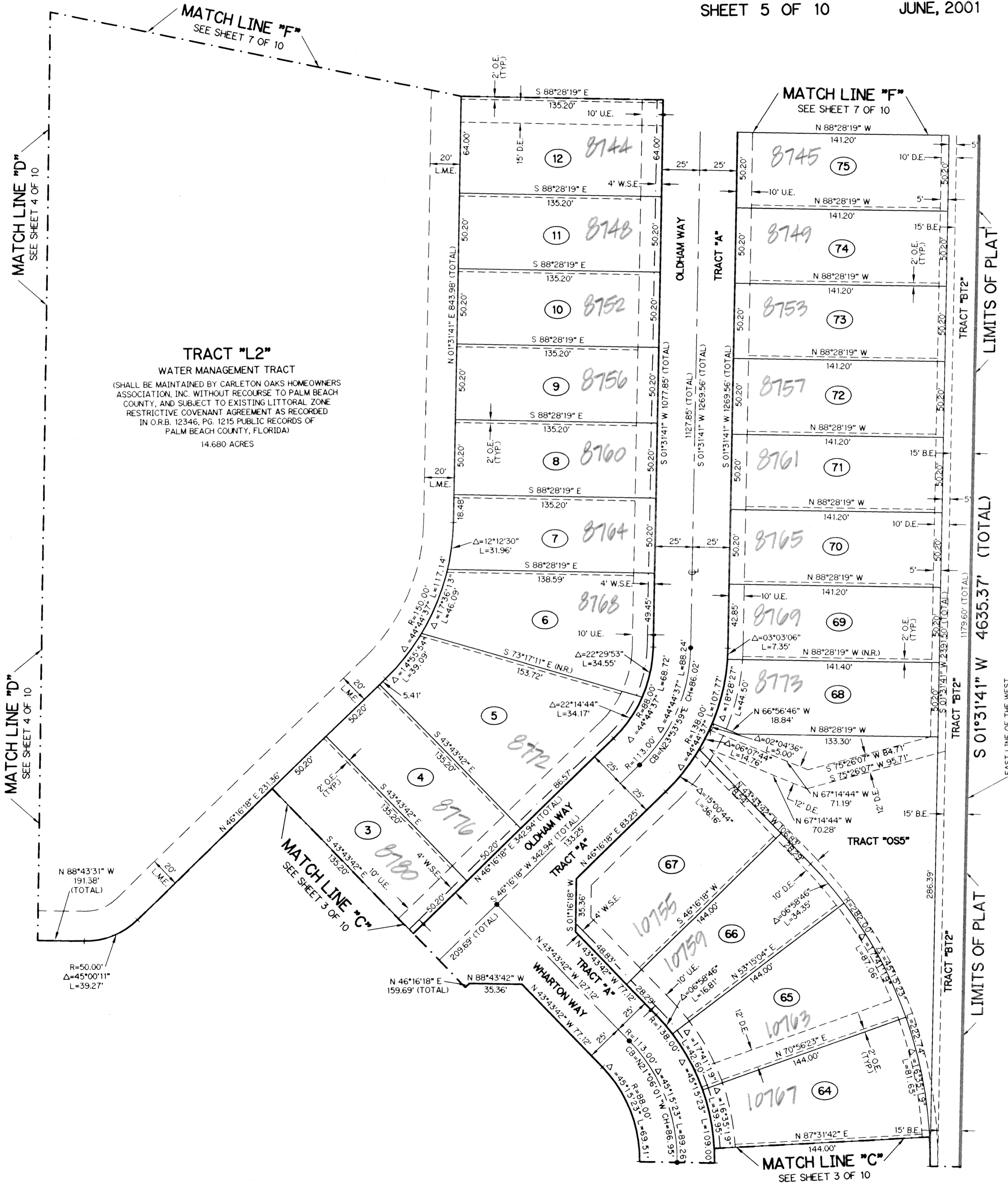


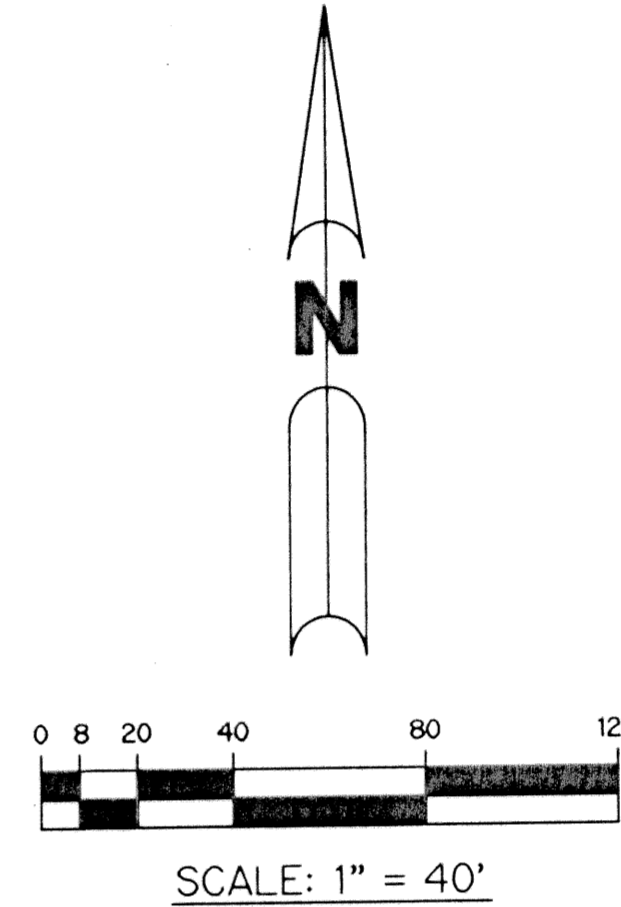
CARLETON OAKS

CARLETON OAKS PLANNED UNIT DEVELOPMENT
BEING A PARCEL OF LAND LYING IN THE WEST ONE-QUARTER OF SECTION 13,
TOWNSHIP 42 SOUTH, RANGE 41 EAST, PALM BEACH COUNTY, FLORIDA.

SHEET 5 OF 10 JUNE, 2001



TRACT "L2"
WATER MANAGEMENT TRACT
(SHALL BE MAINTAINED BY CARLETON OAKS HOMEOWNERS ASSOCIATION, INC. WITHOUT RECOURSE TO PALM BEACH COUNTY, AND SUBJECT TO EXISTING LITTORAL ZONE RESTRICTIVE COVENANT AGREEMENT AS RECORDED IN O.R.B. 12346, PG. 1215 PUBLIC RECORDS OF PALM BEACH COUNTY, FLORIDA)
14.680 ACRES

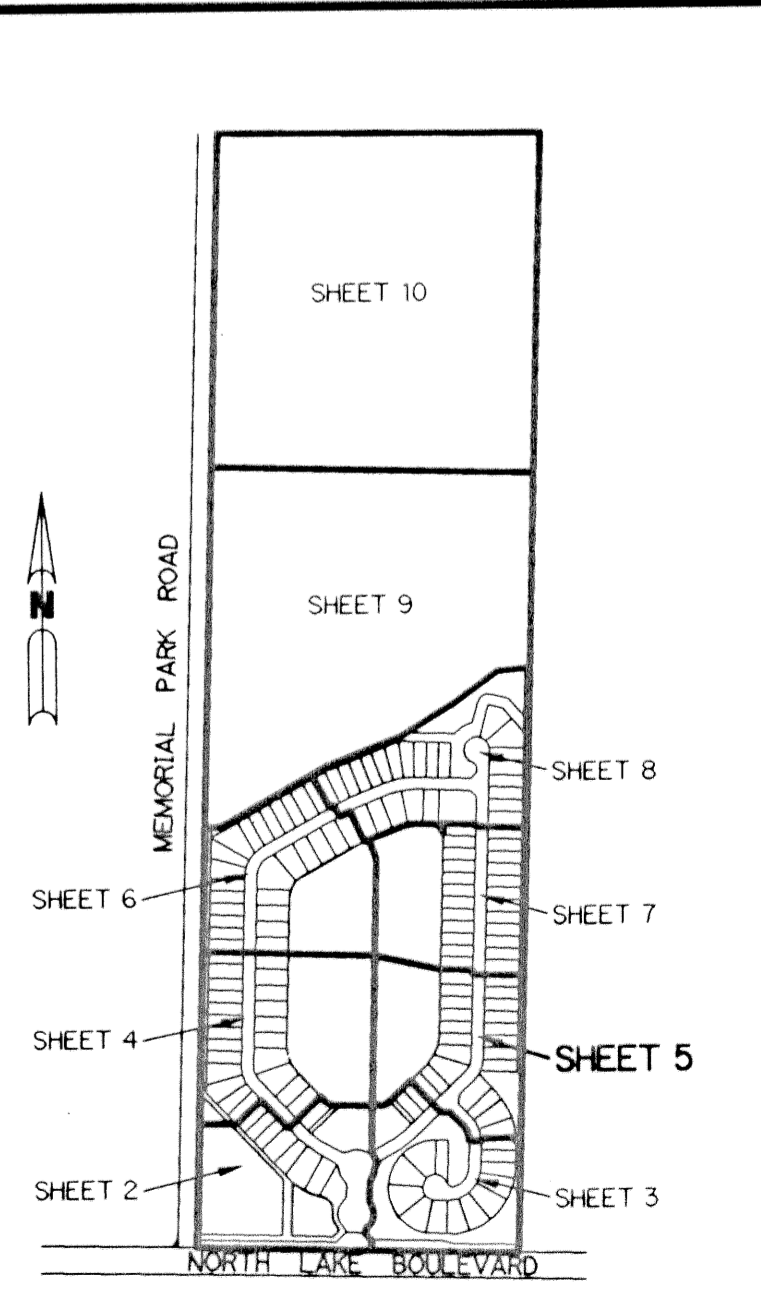


NOTE:
COORDINATES SHOWN ARE GRID COORDINATES
DATUM = NAD 83 (1990 ADJUSTMENT)
ZONE = FLORIDA EAST ZONE
LINEAR UNIT = U.S. SURVEY FEET
COORDINATE SYSTEM 1983 STATE PLANE
TRANSVERSE MERCATOR PROJECTION
ALL DISTANCES ARE ROUND
SCALE FACTOR = 1.0000171
NO ROTATION

LEGEND:

- - SET PERMANENT REFERENCE MONUMENT, LB-6674
- - PERMANENT CONTROL POINT, LB-6674
- Δ - DELTA ANGLE
- BE - BUFFER EASEMENT
- C - CENTERLINE
- CB - CHORD BEARING
- CH - CHORD LENGTH
- DB - DEED BOOK
- DE - DRAINAGE EASEMENT
- L - ARC LENGTH
- L.A.E. - LIMITED ACCESS EASEMENT
- L.M.A.E. - LAKE MAINTENANCE ACCESS EASEMENT
- L.M.E. - LAKE MAINTENANCE EASEMENT
- L.W.D.D. - LAKE WORTH DRAINAGE DISTRICT
- NR - NOT RADIAL
- N.T.S. - NOT TO SCALE
- O.R.B. - OFFICIAL RECORD BOOK
- P.B. - PLAT BOOK
- P.S. - PAGES
- PRM - PERMANENT REFERENCE MONUMENT
- P.S.M. - PROFESSIONAL SURVEYOR AND MAPPER
- R - RADIUS
- R/W - RIGHT-OF-WAY
- S.T. - SURVEY TIE
- U.E. - UTILITY EASEMENT
- W.S.E. - WATER AND SEWER EASEMENT
- N 814602.8657 - DENOTES STATE PLANE COORDINATES
- E 785753.1680 - DENOTES STATE PLANE COORDINATES

THIS INSTRUMENT PREPARED BY
WILBUR F. DIVINE, P.S.M. 4190, STATE OF FLORIDA
LAWSON, NOBLE AND WEBB, INC., LB-6674
ENGINEERS PLANNERS SURVEYORS
420 COLUMBIA DRIVE, SUITE 110
WEST PALM BEACH, FLORIDA



KEY MAP
N.T.S.

SUBDIVISION CARLETON OAKS
PAGE 149
BOOK 01 FLOOD MAP # C050 B
FLOOD ZONE B ZONING PUD
QUAD # 58 ZIP CODE 33417
SE
TAZ 825
PRENAME CARLETON OAKS